

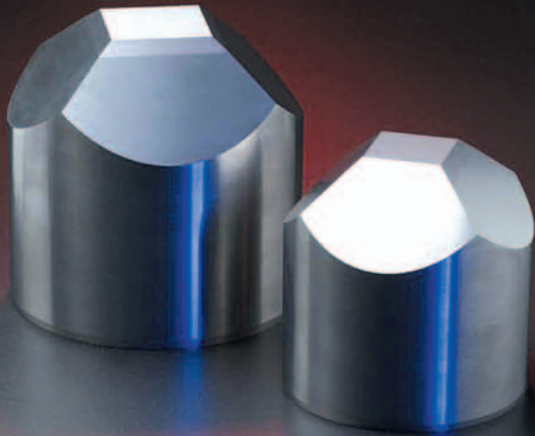
*Engineering
Your
Competitive
Edge*



**TUNGSTEN CARBIDE
SPECIALTY PRODUCTS**

Engineering
Your
Competitive
Edge

IN TUNGSTEN CARBIDE



ANVILS



Developing Cutting-Edge Solutions for Ever-Changing Needs

Kennametal Specialty Products (KSP) has built its reputation on helping customers solve the most demanding high pressure, corrosion, engineering, and wear problems.

As North America's premier producer of medium to large precision tungsten carbide engineering and wear parts, you can count on KSP to help design a solution to meet your needs. Each of our products – from Low Density Polyethylene Plungers to Diamond Compaction Anvils to Steel Mill Products – is engineered and manufactured to provide unsurpassed performance and durability. That's your Competitive Edge!

Quality Engineering and Materials

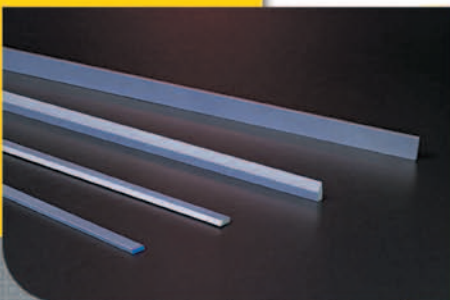
At KSP, performance is engineered into every product we make. We refine our own raw materials, mill and blend our own powders. Our applications engineers are always available to work closely with you to analyze your most troublesome application and wear problems. An extensive list of tungsten carbide grades assures that you will get the best formulation for your specific needs.

HIGH-PERFORMANCE SPECIALTY WEAR PARTS

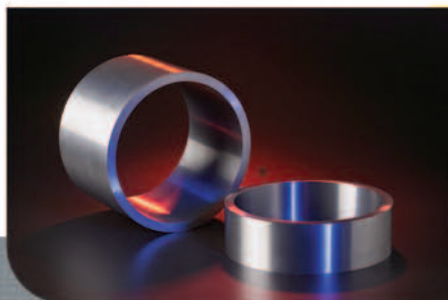
- LDPE Plungers and Liners
- Diamond Compaction Anvils
- Diamond Compaction Dies and Punches
- Seal Rings
- Water Catalyst Pump Plungers
- Boring Bar Blanks
- Work Rest Blades
- Paper Knife Blades
- Anvil Rings
- Chopper Knives
- Dies and Bushings



LDPE PLUNGER



WORK REST BLADES



ANVIL RINGS



BORING BAR BLANKS

BIDE WEAR PARTS

Unmatched Manufacturing Capability

Kennametal Specialty Products is unrivaled in its ability to produce very large solid tungsten carbide components, including lengths up to 65 inches (1650 mm) and diameters up to 20 inches (510 mm).

Our manufacturing capabilities include Sinter-HIP and hard HIP (Keziz™) processes to virtually eliminate pits and internal flaws that can affect durability and performance. Components can be supplied unground or precision finished, offering you single-source convenience.

KSP manufacturing facilities are ISO9002/2000 certified, and our quality control and non-destructive testing capabilities are in conformance with nuclear industry and U.S. military standards.

The Wear Parts Experts

Customers have come to expect quality and performance in everything we do.

KSP is part of the worldwide Kennametal Engineered Products Group, where our researchers at the Kennametal Technology Center are constantly working to develop new grades and manufacturing techniques to address customers' most demanding wear and performance problems.

Around the world, our parts are performance proven. In virtually every application, KSP components last longer, provide more consistent performance and reduced maintenance downtime. In short, parts from KSP enhance your productivity.



STEEL MILL ROLLS

STEEL MILL PRODUCTIVITY SOLUTIONS

- Rod Mill Rolls
- Work Rolls
- Sendzimir Mill Rolls
- Wire Flattening Rolls
- Straightening Rolls
- Slitter/Trimmer Knives



SOLID
CARBIDE
PUNCH



SEAL RINGS



SLITTER KNIVES



**Kennametal EPG —
Kennametal Specialty Products (KSP)**

200 Chestnut Ridge Road
Latrobe, PA 15650
Phone: 800/392-8141
Fax: 724/539-5802
www.kmtspecialtyproducts.com

Kennametal EPG — Boride Products

2879 Aero Park Drive
Traverse City, Michigan 49686
Phone: 800/662-2131 or 231/946-2100
Fax: 800/662-2132 or 231/946-3025
www.boride.com

Kennametal EPG —Carbidie

425 Arona Road
Irwin, PA 15642
Phone: 800/227-2434 or 724/864-5900
Fax: 724/864-2443
www.carbidie.com

Kennametal EPG —Carmet

205 North 13th Street
Rogers, Arkansas 72757
Phone: 800/693-2706
Fax: 800/694-5389 or 479/621-4727
www.carmet.com

**Kennametal EPG — Tungsten Carbide
Manufacturing (TCM)**

23035 Commerce Drive
Farmington, MI 48335
Phone: 800/782-1374
Fax: 248/471-9127
www.tcmrod.com



**Your engineered wear parts solution is at
epgquotes@kennametal.com**



Kennametal World Headquarters, Latrobe, Pennsylvania.

EPG IS COMMITTED TO BEING A
GLOBAL LEADER OF ENGINEERED
WEAR SOLUTIONS THROUGH ADVANCED
MATERIALS, INNOVATIVE DESIGN
TECHNOLOGY AND AN UNYIELDING
DEDICATION TO EXCEEDING OUR
CUSTOMERS' EXPECTATIONS.