

*Engineering  
Your  
Competitive  
Edge*



***TUNGSTEN CARBIDE PREFORMS,  
DIE AND WEAR PARTS***

Engineering  
Your  
Competitive  
Edge

# IN TUNGSTEN CARBIDE



## Providing the Competitive Edge for Over 50 Years

Customers with demanding applications around the world have made Carbide their supplier of choice for the widest assortment of preformed and unfinished tools, dies, die sections and components made from tungsten carbide, including grades with submicron size particles.

Carbide's specially engineered tungsten carbide components offer unsurpassed wear properties. In fact, you can count on high quality Carbide parts to last a minimum of 10 times longer than steel in most applications.

## Unmatched Manufacturing Capability

Carbide components are engineered to provide optimum levels of performance and dependability. Our wide assortment of more than 30 performance-proven grades assures that you'll get the right grade for the right job.

And now, Carbide offers the revolutionary CD-KR466 grade that offers superior resistance to electrolytic attack during EDM, provides 100 times better corrosion resistance, and outstanding post-EDM mechanical properties.

Our flexible manufacturing capability allows us to handle everything from the simplest, one-piece part order to custom fabrication of the most complex shapes.

EDM PREFORMS

### PRODUCTS FOR DIVERSIFIED APPLICATIONS

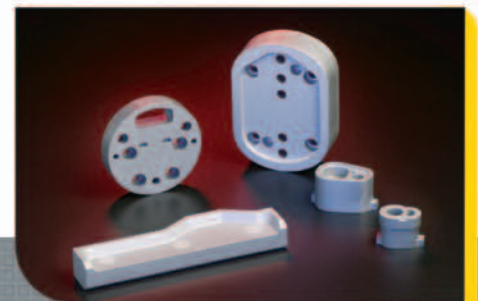
- Compacting
- Drawing
- Forming Dies
- Stamping Dies
- Cold Forming Tools
- Impact Tools
- Wear Parts
- Seal Rings
- Container Tooling
- Slitter Knives
- Rod Mill Rolls
- Fluid Flow Control
- EDM Blanks
- Nozzles



ROTARY TOOLS



WEAR PARTS



CONTAINER TOOLING

# CARBIDIE PREFORMS

## Proven Performance Worldwide

Demanding applications require wear parts of exceptional performance. Our tooling delivers long-life and maintains design tolerance through multiple-use cycles.

As part of the worldwide Kennametal Engineered Products Group, Carbidie's applications engineers bring the resources of Kennametal and its global leadership in complex metallurgy and material science together to help solve our customers' most complex wear and performance problems.

Working in partnership with the Kennametal Technology Center, we also have the capabilities to develop and test new tungsten carbide grades that are tailored to your specific needs.

## Deliveries When You Want Them

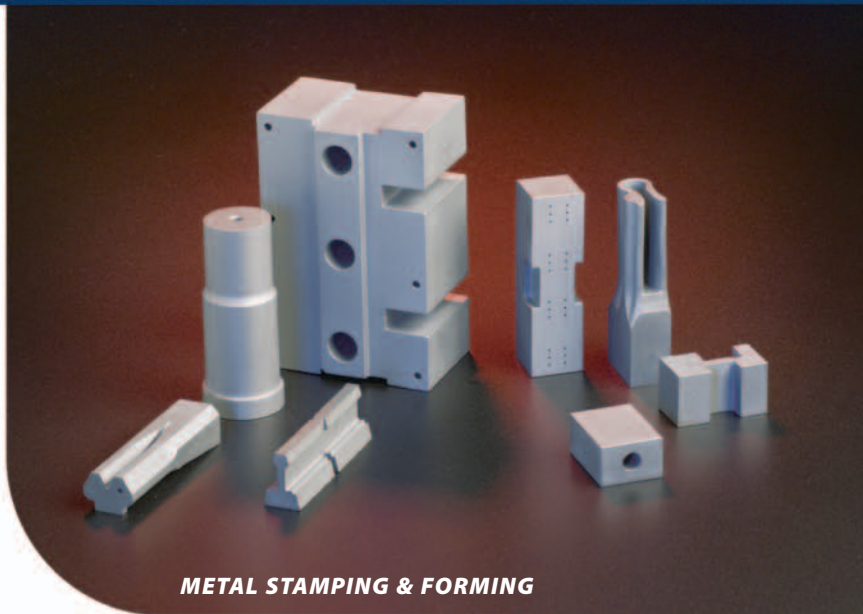
Because Carbidie formulates its own proprietary grades and controls manufacturing and quality every step of the way, you can be assured that your order will be available when you want it.

Most parts ship within seven to 10 days following receipt of your order. We offer 48-hour emergency part replacement service on many of our custom preformed blanks, with expedited overnight delivery around the world.

## The Wear Parts Experts

At Carbidie, we strive to offer our customers outstanding performance and value in everything we do.

Our strict adherence to uncompromising design standards and rigorous quality control procedures through every step of the manufacturing process has enabled Carbidie products to set industry benchmarks for cost-effective product performance and field service.



METAL STAMPING & FORMING

### NEW CORROSION-RESISTANT GRADE

*Carbidie, working in collaboration with the engineers at Kennametal Research & Development, introduce the Next Generation in corrosion-resistant grades: CD-KR466.*

- Resists electrolytic attack and chemical leaching during the EDM process
- Provides 100 times better corrosion resistance than standard tungsten carbide materials
- Potentially increases productivity in EDM processing by decreasing the number of trim/finish cuts
- Provides superior post-EDM mechanical properties



COMPACTION TOOLING



FLUID FLOW CONTROL



#### **Kennametal EPG — Carbidie**

425 Arona Road  
Irwin, PA 15642  
Phone: 800/227-2434 or 724/864-5900  
Fax: 724/864-2443  
[www.carbidie.com](http://www.carbidie.com)

#### **Kennametal EPG — Boride Products**

2879 Aero Park Drive  
Traverse City, MI 49686  
Phone: 800/662-2131 or 231/946-2100  
Fax: 800/662-2132 or 231/946-3025  
[www.boride.com](http://www.boride.com)

#### **Kennametal EPG — Carmet**

205 North 13th Street  
Rogers, AK 72757  
Phone: 800/693-2706  
Fax: 800/694-5389 or 479/621-4727  
[www.carmet.com](http://www.carmet.com)

#### **Kennametal EPG — Kennametal Specialty Products (KSP)**

200 Chestnut Ridge Road  
Latrobe, PA 15650  
Phone: 800/392-8141  
Fax: 724/539-5802  
[www.kmtspecialtyproducts.com](http://www.kmtspecialtyproducts.com)

#### **Kennametal EPG — Tungsten Carbide Manufacturing (TCM)**

23035 Commerce Drive  
Farmington, MI 48335  
Phone: 800/782-1374  
Fax: 248/471-9127  
[www.tcmrod.com](http://www.tcmrod.com)



**Your engineered wear parts solution is at  
[eggquotes@kennametal.com](mailto:eggquotes@kennametal.com)**



*Kennametal World Headquarters, Latrobe, Pennsylvania.*

EPG IS COMMITTED TO BEING A  
GLOBAL LEADER OF ENGINEERED  
WEAR SOLUTIONS THROUGH ADVANCED  
MATERIALS, INNOVATIVE DESIGN  
TECHNOLOGY AND AN UNYIELDING  
DEDICATION TO EXCEEDING OUR  
CUSTOMERS' EXPECTATIONS.